

## Applicant Assurances

*Print this sheet, complete and sign the spaces at the bottom, scan, and attach to the electronic application.*

*The Board Chair must sign the following agreement prior to submitting the application package.*

*Should the agreement be signed by someone other than the current Board Chair, the application package will be deemed Administratively Incomplete.*

School Name: Salt Lake Arts Academy

The Applicant certifies all information contained in this application is complete and accurate, realizing that any misrepresentation could result in disqualification from the Expansion Application process or revocation after award.

The Applicant understands that applications must be received by SCSB staff no later than 1 July for the next school year and that late/incomplete applications will not be considered.

The Applicant acknowledges that all information presented in the application package, if approved, becomes part of the charter and will be used for accountability purposes throughout the term of the charter.

The Applicant acknowledges that the charter school governing board is subject to all Utah statutes regarding charter schools as well as all relevant federal, state and local laws, and requirements, and follows such.

The Applicant acknowledges that the charter school meets the eligibility requirements listed on the SCSB webpage and that there are no student health, safety, or welfare issues.

The Applicant acknowledges that the prior two years of academic data will be provided to the SCSB for its consideration of the application. Additionally, the academic data of other schools will be considered.

The Applicant acknowledges that prior to inclusion on the agenda, the SCSB recommends charter school governing boards schedule an appointment with SCSB staff to discuss the Expansion Application and provide clarification to any questions.

The Applicant acknowledges that the school's governing board voted in an open and public meeting to request this expansion.

The Applicant acknowledges that the school's governing board must appear before the SCSB in an open and public meeting to request this expansion.

Matthew W. Nelson  
Name of Board Chair  
(please print)

[Signature] 02/22/19  
Signature of Board Chair /Date

## School Entity Information

Name of School: Salt Lake Arts Academy

Name of School Administrator: Amy Wadsworth

Local School District: Salt Lake Arts Academy

Provide a statement describing the mission of the school: The mission of the Salt Lake Arts Academy is to prepare students to become confident and creative builders of their future, equipped through the arts and academics to take responsibility for shaping their communities.

*Below, list the names and positions of all current Board Members (officers, members, directors, partners), and their positions. Also list any other current charters in which they act as a corporate principal or charter representative. Add rows as necessary.*

Name	Position	Current Charter Affiliations
Matt Nelson	Board Chair	None
Ron Zamir	Member	None
Alonzo Huntsman	Member	None
Scott Messersmith	Member	None
Luna Banuri	Member	None
Heather Soderquist	Member	None
Joaquin Mixco	Member	None
Jim Kreeck	Member	None
Jennifer Goldman-Luthy	Member Chair Elect	None
Julie Livers	Member	None
Denise Begue	Member	None
Andy Yorkin	Member	None
Chris Mautz	Member	None
Jeff Stevens	Member	None

**Required Exhibits:**

- Minutes of the board meeting authorizing application for expansion.

**Population and Enrollment**

X By checking this box, I understand and agree that the enrollment policies must be consistent with state law and Board rule, and that increased enrollment of students cannot begin until the Expansion Application is approved.

Grade Levels to be Served: 5<sup>th</sup> - 8<sup>th</sup>

Projected Maximum Enrollment: 440

Note: When completing the table, be sure to indicate the school year in the box labeled SY. Schools are listed as SY with the two-digit year for the end of the year. For example: SY17 is the 2016-2017 school year. Start with the year you wish to begin the expansion. Please do not leave any boxes blank. If you do not plan to include a grade place a 0 in the box.

		Grades and Specific Number of Students Served by Grade												
		K	1	2	3	4	5	6	7	8	9	10	11	12
SY	21						110	110	110	110				
		K	1	2	3	4	5	6	7	8	9	10	11	12
SY	22						110	110	110	110				
		K	1	2	3	4	5	6	7	8	9	10	11	12
SY	23						110	110	110	110				

Attach a clear, specific and concise response about the proposed target population. The expected page length for all five questions is no more than two pages.

1. Describe the population of the school that includes a demographic profile listing the percentage of minority students, the percentage of students with disabilities qualifying for special education services, the percentage of economically disadvantaged students, the percentage of English Learners, academic performance of students entering the school, and distance travelled by current students.
2. Compare the description in question one (1) to the local school district of the sponsoring school.
3. Describe the market analysis that supports the successful enrollment of the projected student count from the target population. Include current wit list numbers as well as what makes this school unique or needed.
4. Describe the enrollment practices, processes, and policies of the school.

## SLA POPULATION and ENROLLMENT

**Demographic Profile / Local School District Comparison:** Salt Lake Arts Academy is chartered by the State of Utah and accepts students living throughout the State. Our 400 students come from 26 different zip codes this year, primarily from Salt Lake county, but some come from Davis and Tooele County as well. Our student population is 22% minority, 8% receive Special Education services, 14% are economically disadvantaged and we have less than 1% English Language Learners. Our entering 5th Grade arrives at SLArts having performed slightly better than average on State mandated testing, but with a wide range of levels of proficiency. As a State-chartered school Salt Lake Arts Academy is demographically representative of our state as a whole, but not representative of the Salt Lake School District, per se.

**Market Analysis:** There are no other middle schools in Salt Lake City serving our mix of grades (5<sup>th</sup> – 8<sup>th</sup>.) Our educational niche is the integration of daily arts education, coupled with rigorous academic programming in the rich environment of downtown Salt Lake City.

2018-19	Retention	Applied	Admitted	Waiting List
5	n/a	147	100	47
6	95 of 101	78	6	72
7	87 of 102	78	15	63
8	95 of 96	13	1	12
2019-20	Retention*	Applied	Admitted	Waiting List
5	n/a	163	110	53
6 <sup>th</sup>	100	58	1	57
7 <sup>th</sup>	101	73	5	68
8 <sup>th</sup>	103	33	1	32

\* Salt Lake Arts Academy has received “Intent to Return Forms” from these students; true retention cannot be measured until fall of 2019. As demonstrated, historical retention is high. Historically, we have consistently received between 300 to 350 applications for around 120 seats.

## **Admissions and Enrollment Processes and Policies**

Salt Lake Arts Academy follows the Policy below for Admissions and Enrollment, adopted by the school's Governing Board. We recruit for new students via our Website, our Facebook page, through email blasts to current families and through information distributed at public libraries in Salt Lake City. The Admissions and Enrollment Policy follows State law, where students who submit a timely application are admitted, unless the number of applications exceeds the capacity of a class, grade level or the school. Applications are accepted beginning in October until the third week of February for the following school year. Admissions preferences are granted to siblings of currently or formerly enrolled students, children or grandchildren of founders, children of current Governing Board Member and children of Faculty members.

At the end of the admissions period, an Admissions Lottery is conducted and Applicants who are not admitted will be placed on a wait list, in the order in which they were selected in the lottery. A new lottery is conducted each year. The wait list expires at the end of the academic year for which the application was submitted. No wait-list positions roll over.

Salt Lake Arts Academy prohibits discrimination based on race, creed, color, gender, religion, ancestry, disability or need for special education service. We want to encourage a diverse student population and will target additional recruitment efforts toward groups that might otherwise have limited opportunities to participate in SLArts' program.

### **Enrollment Timeframe**

Should Salt Lake Arts Academy receive permission to increase enrollment by 40 students, the school will not immediately add to the student body. Instead, we will plan to increase our instructional spaces to accommodate extra sections of core academic classes, and hire additional faculty to teach those sections. Then, once the school facility is ready, and additional faculty have been hired, we will accept 40 additional students (10 per grade) during our regular admissions and enrollment window.

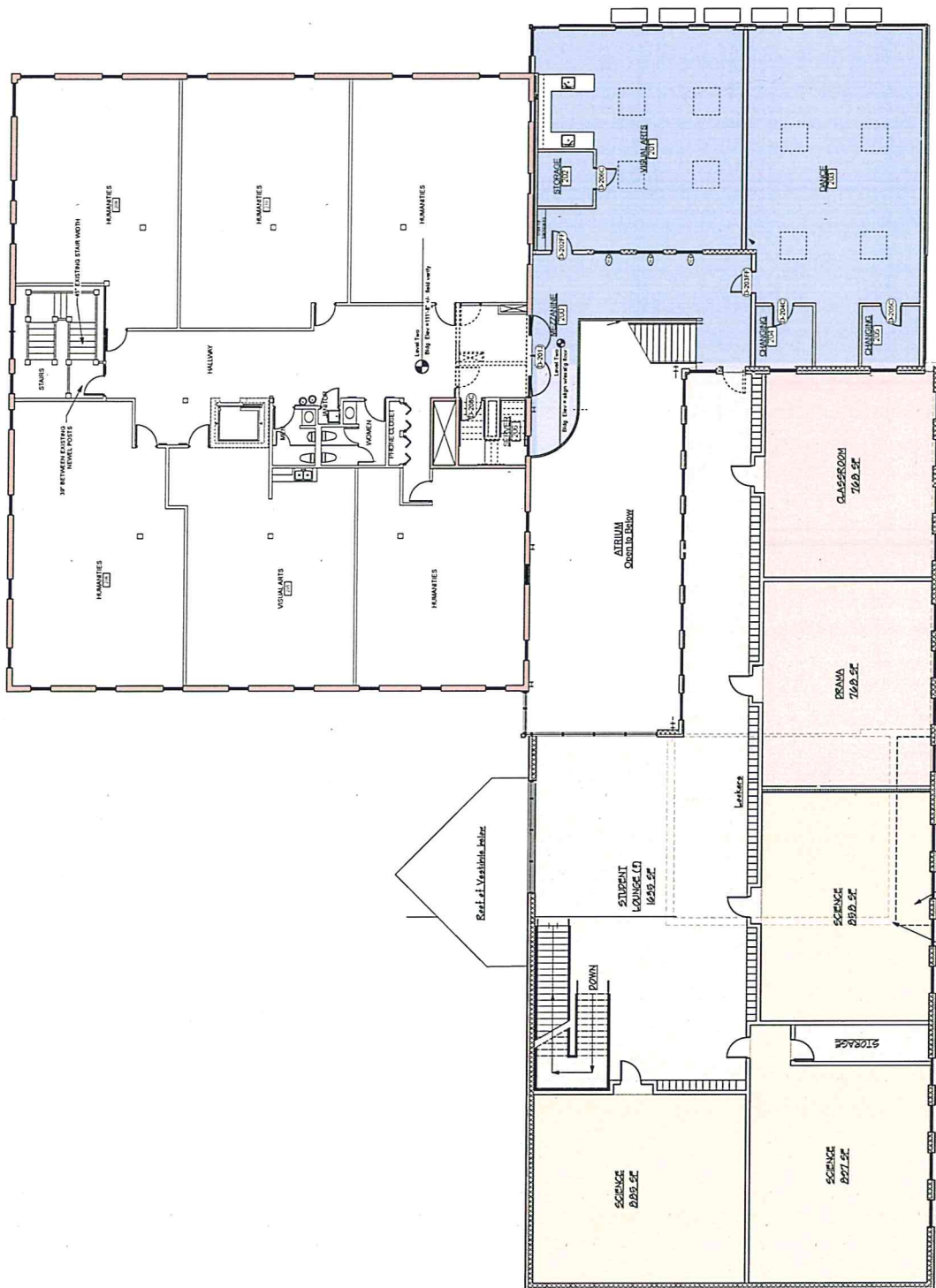
During the Admissions season when the expansion would occur, we will be placing extra emphasis on our new school size in our marketing and student recruitment efforts. We will be emphasizing the fact that adding more students will actually decrease class size, as more sections become available.

## SLA Section A: Facilities Plan for Expansion

A-1 See attached

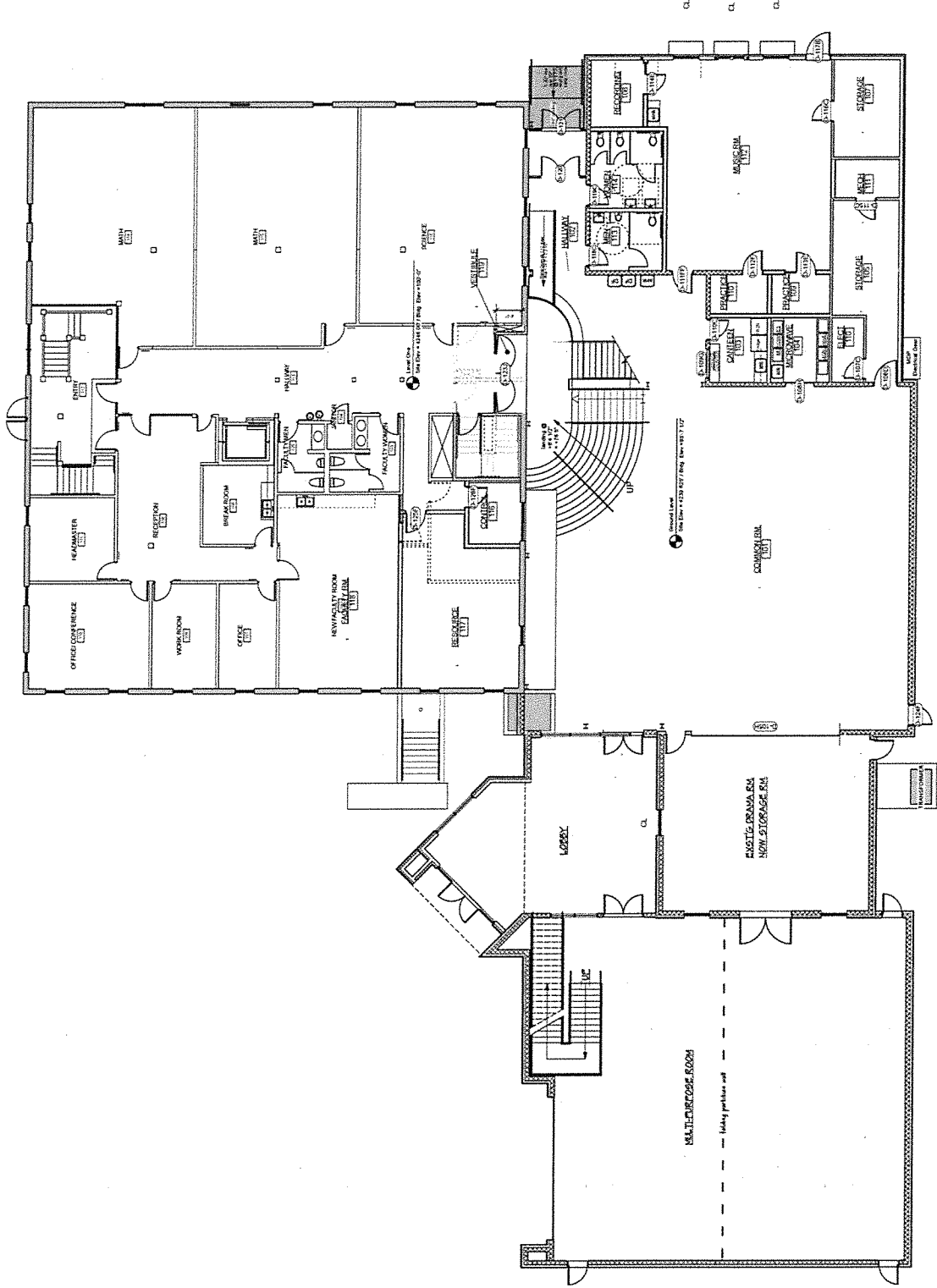
A-2 We are in the process of refinancing our current bond. If our bond refinancing is approved in April 2019, and we have the approval to expand our student population by 40, we would use the 2019 - 20 school year to start and complete our facility expansion. This would be timed to open in August 2020 with 440 students.

A-3 We are in the process of assembling all of the data for this expansion. Our estimate is that the expansion would come in at \$1.5 million.



1 Second Level Floor Plan





1 Ground Level Floor Plan





Salt Lake Arts Academy  
Governing Board  
Minutes from Meeting February 22, 2019  
4:00 p.m.  
PENDING APPROVAL

**Board Members present:** Matt Nelson, Heather Soderquist, Chris Mautz, Soctt Messersmith, Jennifer Goldman-Luthy, Joaquin Mixco, Jeff Stevens, Andy Yorkin, Jim Kreeck, Julie Livers, Ron Zamir

**Board Members excused:** Luna Banuri, Denise Begue, Lon Huntsman

**Staff present:** Amy Wadsworth, Moni Schwaerzler, Heather Shepherd, Katy Andrews

**Matt Nelson** called the meeting to order at 4:00 p.m.

**Amy Wadsworth** presented information on the school's progress on securing re-financing of the Bond. Admin and the Finance Committee are continuing to work on securing a refinancing package from either the State of Utah, or the Charter Impact Fund.

**Amy** noted that we recently learned that the Liberty Wells Community Center, which we use for PE daily, may not be available at all in the near future. Other community space may be available nearby but will be very expensive to rent and may not jive with the schedule we require.

**Amy and Moni Schwaerzler** noted that while we seek refinancing options, and given this newly arisen need for space, it may make sense to seek financing that would allow us to not just build out new classrooms over the commons, but also expand the school to the north of the existing Drama space. An expansion of this size would solve much of SLArts' space-related issues. Kenton Peters architects and Paulsen Construction have visited the school and meet with the Board's Facilities Committee to take the first steps towards a building plan and drawings which SLArts will need to both seek refinancing and for the bidding process. **Katy Andrews** pointed out that in our 2018 Strategic Planning Survey, facilities upgrades and adequate instructional spaces were one of the top "hot button" issues for Faculty and parents.

**Amy and Moni suggested the Board consider applying to the State Charter School Board for an amendment to Salt Lake Arts Academy's Charter to add 40 more students (10 per grade).** Amy says the rationale behind this expansion would be to reduce class size – current class sizes are approximately 25 per section, with four sections of each subject. Ten additional students per grade would allow for six sections

of 22 students in each subject. The funding following these students would allow for hiring Faculty to support those additional sections, and would help in the ongoing operational budget for a new space.

The Board noted that applying for and being granted an expansion does not obligate SLArts to enroll more students, instead it provides an option for managed growth. The Board also noted that the additional students would not be added unless the Facility build-out became a reality.

**VOTING ACTION:** After discussion Jim Kreeck moved that Admin be given permission for Salt Lake Arts Academy to apply to the State Charter School Board to amend our charter to accept 440 students. Joaquin Mixco seconded the motion. The vote was unanimous by Board members in attendance.

Matt thanked the Board for their time and adjourned the meeting at 4:45 p.m.

5. Describe the enrollment timeframe that will be implemented and shared with the public.

## Facilities

Does this expansion of student enrollment require a new facility or a significant structural change to an existing facility?

Yes (Complete Section A)

No (Skip Section A)

### *Section A: Facilities Plan for Expansion*

*Attach the following information regarding the new facility or structural change.*

- A-1. Attach renderings or describe the facility size and layout suitable for implementing the Educational Plan. If renderings are not available, provide the date when the documents will be submitted to SCSB staff.
- A-2. Describe the timeline for completion of the facility by the start date.
- A-3. Describe the financing requirements needed for this facility project. As required by statute, submit all contracts to SCSB prior to entering into any facility contracts.

## Charter Fidelity

1. Describe the manner in which the school is meeting each key element and/or goal. Supply appropriate data, as applicable.

Metric or Key Element	How Meeting?	Data
The purpose of the Salt Lake Arts Academy is to offer a unique middle school experience for grades 5-8 that takes advantage of the rich educational environment in the downtown area and provides a strong academic foundation with an emphasis on the arts.	In 5th Grade, every student moves through Level I in each of the arts offered -- music, dance, drama, and visual arts, with each subsequent year building increased proficiency as students select the art form they wish to pursue more deeply. By 8th Grade, students are performing at a Level 3 in one or more art forms.	We have held on average 10 student performances each year. Students attend over 10 field trips each year in the downtown.
The Academy will provide an intimate learning community that is responsive to the unique characteristics of 10-14-year old students. Classes will be small to insure a personalized learning environment where students are taught in flexible groupings.	We have maintained a curricular program that is built around differentiated instruction and assessment. Students are provided choices to demonstrate mastery of concepts and skills.	Our report card measures students in Proficiency as well as PEPR (Preparation, Effort, Participation, Risk-taking) as well as CAB (Collaboration, Attitude and Behavior)

<p>The Academy students will use the arts to expand and deepen their knowledge in the Sciences, Social Sciences, Mathematics, and Literature.</p>	<p>Teachers have designed curriculum and assessment to offer students a variety of performance opportunities to demonstrate the depth of their understanding. Based upon Bloom's Revised Taxonomy, the highest measure of achievement is a student's ability to <i>create</i>.</p>	<p>Students are assessed on a 4 point rubric with the extension of a 5 for students who are highly proficient and go beyond. The teachers have developed “SLArts Challenge” projects that require students to creatively demonstrate their degree of understanding.</p>
<p>The Academy will also serve as a professional development partner with the education programs from Westminster College and the University of Utah, providing integrated training for the developing teacher. Education majors from these institutions will use the Academy for their field experience ranging from beginning course work to student teaching. Academy teachers and specialists will mentor these pre-service teachers while incorporating the most current research that the university students bring to bear.</p>	<p>We have not had many student teachers assigned to our school, but have welcomed and worked with numerous college students who are in the early stages of their program.</p>	<p>We have participated with Arts Bridge Scholars, Salt Lake Community College, and Westminster.</p>
<p>The faculty will include specialists from the community with expertise in specific fields. These staff members will work in collaboration with a certified teacher.</p>	<p>We have partnered with Arts Bridge, RDT and Ririe Woodbury Dance Company for a 3 year residency.</p>	<p>Residency with Ririe Woodbury Dance.</p>
<p>Reading and writing instruction will be linked to the school wide themes in addition to the study of specific genres. Instruction, assessment and materials will be differentiated to meet the specific interests and proficiencies of the students.</p>	<p>Humanities classes draw from the Utah Language Arts Core curriculum and use reading selections that connect with the historical content and themes. The past 4 years have focused on the theme of Elements of creating a better world.</p>	<p>For 2019, we have used the theme of “fire” to explore the “spark of innovation, crucible of beliefs, trail blazers and extinguishing fear.</p>
<p>In the 5th and 6th grades, students will explore the arts through 4</p>	<p>In 5th Grade, every student moves through Level I in each</p>	

<p>eight-week classes taught by an arts specialist in that field. The students will learn the skills, concepts, and principles that are the artists’ tools. The teacher specialists will also link to the core commonalities that are being taught in other subject areas.</p>	<p>of the arts offered -- music, dance, drama, and visual arts, with each subsequent year building increased proficiency as students select the art form they wish to pursue more deeply. For the 2019 school year, arts teachers have connected to the school theme of Fire through the social studies time frame of the Reformation, Renaissance and Exploration.</p>	
<p>In the 7th and 8th grades, students will select two art forms that they will study in greater depth. These will be taught by specialists and will also link to the core commonalities that are being taught throughout the school.</p>	<p>All 7<sup>th</sup> and 8<sup>th</sup> grade students have one hour in the arts daily. Some students have two arts classes each day.  We have maintained highly proficient faculty to teach all of the arts.</p>	<p>Students move from Level 1 to Level 3 in their selected art form. They perform multiple times during the school year.</p>

## Business Plan

A school that does not meet all four of the financial indicators on the CSPA Accountability Framework does not meet the SCSB’s expectations and must submit additional information as part of its application.

Does the financial performance of the sponsoring school meet the SCSB’s financial performance expectations?

Yes

No

### Required Attachments:

Most recent audited financial report (AFR)

Annual program report (APR)

Audited financial statement

**If answer is no, Financial Performance Information:** In a detailed, yet concise response, address each Financial Performance indicator in which the school did not meet.